

Town of Wrightsville Beach

DEPARTMENT OF PUBLIC WORKS
200 Parmele Boulevard
Wrightsville Beach, N.C. 28480
(910) 256-7935 · FAX 256-7939

Sewer Line Cleaning for FY 20/21

The Town of Wrightsville Beach is seeking proposals and estimates for cleaning and color video inspection and recording of approximately 13,000 feet of sewer line. The area of cleaning/color video recording is noted on the attached photo by yellow lines and a summary of the sewer line lengths is included in the enclosed table.

General. The most common pipe material is clay pipe and the diameters vary from 4" to 8", with the majority of the pipe in the 8" range. The greater part of the cleaning is on side streets. The side street mains are connected to the main gravity line manhole by outside drop connections. During cleaning, materials/debris shall not be allowed to by-pass and flow downstream of the segment being cleaned. Approximately 3,500 feet of sewer main lies in NCDOT roadways/right of ways. The contractor will be responsible for any and all necessary traffic control/devices. Hours of operation are 8:00 am – 5:00 pm, Monday through Friday, unless otherwise specified.

Disposal of Material. Disposal of material collected from the sewer lines will be at the Cape Fear Public Utility Authority; either Northside WWTP or Southside WWTP complex. As such, the contractor must coordinate activity with the Authority. The Town will be responsible for disposal costs.

Inspection Reports. A comprehensive written report (.pdf and hard copy) of the inspection is required. This report must identify line segment direction of travel (upstream/downstream), the location of defect(s) (in feet from start of video), a defect score (1-5, 1 being minimal and 5 being severe) and an estimate of infiltration. In addition to the written report, a complete color video report must be provided on a DVD or flash drive showing each segment of the sewer main cleaned. The videos recorded must be well lit; this will require auxiliary lighting for the camera unit. During video recording, the upstream flow, and any pump station flows, must be stopped in order that infiltration may be determined – any flow stopping must be coordinated with the Town. Software used in making the report must be WinCan compatible.

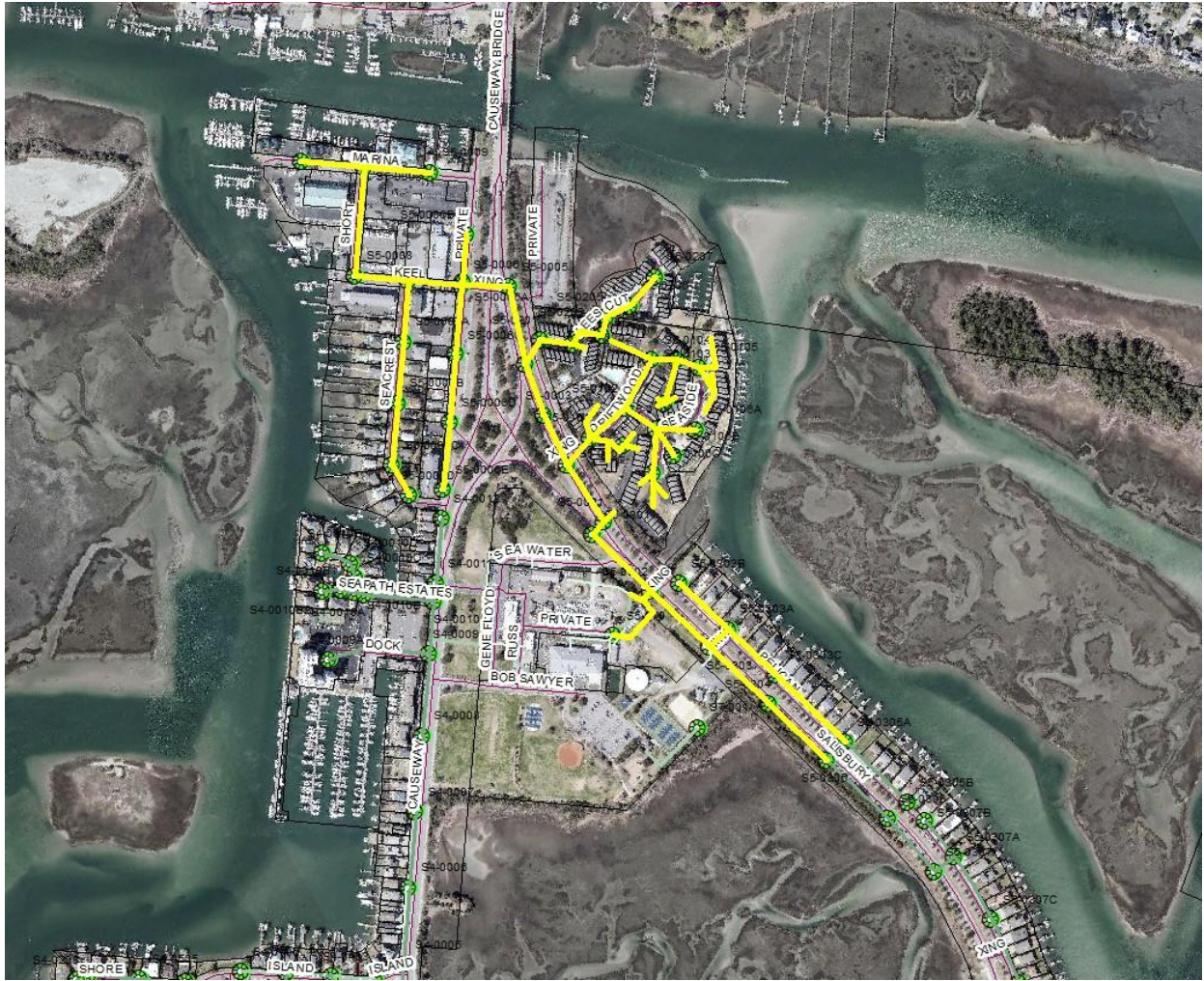
SSOs and Spills. The contractor shall be responsible for any sanitary sewer overflows (SSOs), or spills that occur as a result of his actions. The sewer line cleaning project interacts with a force main from one pump stations; LS 5 (Pelican Drive). The force main from LS 5 connects into the manhole at Causeway Drive and Seawater Lane. Since video of the lines may require the flow through the affected sections to be suspended by plugging the upstream lines into specific manholes, care must be taken in order to prevent backing up sewer into houses or causing a sewer spill. Care should be used to avoid over-pressurizing the lines during cleaning and resulting in water being forced out of water traps in dwellings and residences. The contractor

may coordinate for use of the Town fire hydrants for water; Town-provided backflow protection is required.

Proposals/Bids. Proposals/bids will be evaluated on the basis of combined clean and video pricing. All bids/proposals pricing should be per foot of sewer line and should show the price per foot to clean and the price per foot to video. Also included in the proposal should be any costs for mobilization/demobilization. Additional cleaning may be provided at the agreed upon rate. Proposals should be provided no later than 12/15/2020 at 12:00 pm. The work should be completed prior to 2/1/2021. The Town shall not be responsible for lost or damaged equipment and reserves the right to reject any and all bids. The successful bidder must provide copies of Workmen's Compensation Insurance and Liability Insurance (\$1,000,000) with the Town named as an additional insured.

For questions or additional information, contact:

Bill Fay
Assistant Public Works Director
Town of Wrightsville Beach
200 Parmele Blvd
Wrightsville Beach, NC 28480
910-256-7935
bfay@towb.org



Sewer lines to be cleaned (highlighted in yellow)

Summary Table of Lines to be Cleaned

Line_ID	LENGTH	SIZE_	MATERIAL	Condition	Clean_date	Video_date	Comments
5-0001	62.7	8	VCP				
5-0002	311.6	8	VCP				
5-0003	163.7	8	VCP				
5-0004	208.6	8	VCP				
5-0005	181.8	6	PVC				
5-0005A	83.5	6					
5-0006	69.0	6	VCP				
5-0007	175.5	8	VCP				
5-0008	178.1	8	VCP				
5-0009	145.3	8	VCP				
5-0010	203.7	8	VCP				
5-0011	73.1	6	VCP				
5-0012	85.3	6	VCP				
5-0013	41.4	8	VCP				
5-0014	111.1	6	VCP				
5-0015	253.8	8	VCP				
5-0016	129.1	8	VCP				
5-0017	114.6	8	VCP				
5-0018	107.3	8	VCP				
5-0019	74.5	8	VCP				
5-0019A	135.4	6					
5-0020	138.3	8	VCP				
5-0020A	93.3	6	VCP				
5-0020B	87.3	6	VCP				
5-0021	209.9	8	VCP				
5-0022	57.7	8	VCP				
5-0023	30.0	8	VCP				
5-0024	34.2	8	VCP				
5-0025	78.5	8	VCP				
5-0025	250.8	8	VCP				

5-0025A	249.3	8	VCP				
5-0026	128.8	8	VCP				
5-0027	154.3	8	VCP				
5-0028	62.2	8	VCP				
5-0028A	28.0	6	PVC				
5-0029	105.2	8	VCP				
5-0030	90.2	8	VCP				
5-0031	117.8	8	VCP				
5-0032	176.2	8	VCP				
5-0033	360.4	8	VCP				
5-0034	218.4	8	VCP				
5-0035	242.2	8	VCP				
5-0036	249.6	8	VCP				
5-0037	499.0	8	VCP				
5-0038	304.7	8	VCP				
5-0039	286.2	8	VCP				
5-0040	281.4	8	VCP				
5-0041	282.6	8	VCP				
5-0042	283.2	8	VCP				
5-0042A	159.9	0					
5-0043	158.9	8	VCP				
5-0044	12.7	8	VCP				
5-0045	217.5	8	VCP				
5-0046	315.0	8	VCP				
5-0047	315.6	8	VCP				
5-0048	79.8	8	VCP				
5-0048	309.4	8	VCP				
5-0049	372.6	8	VCP				
5-0050	373.0	8	VCP				
5-0051	117.0	8	VCP				
5-0052	304.9	8	VCP				
5-0053	301.7	8	VCP				

5-0054	443.8	8	VCP				
5-0055	374.2	8	VCP				
5-0056	372.3	8	VCP				
5-0101A	168.5	6	VCP				
5-0101A1	64.3	6					
5-0202A	52.9	6	PVC				
5-070	356.7	8	PVC				
5-071	118.9	6	PVC				
Total	12998.6						